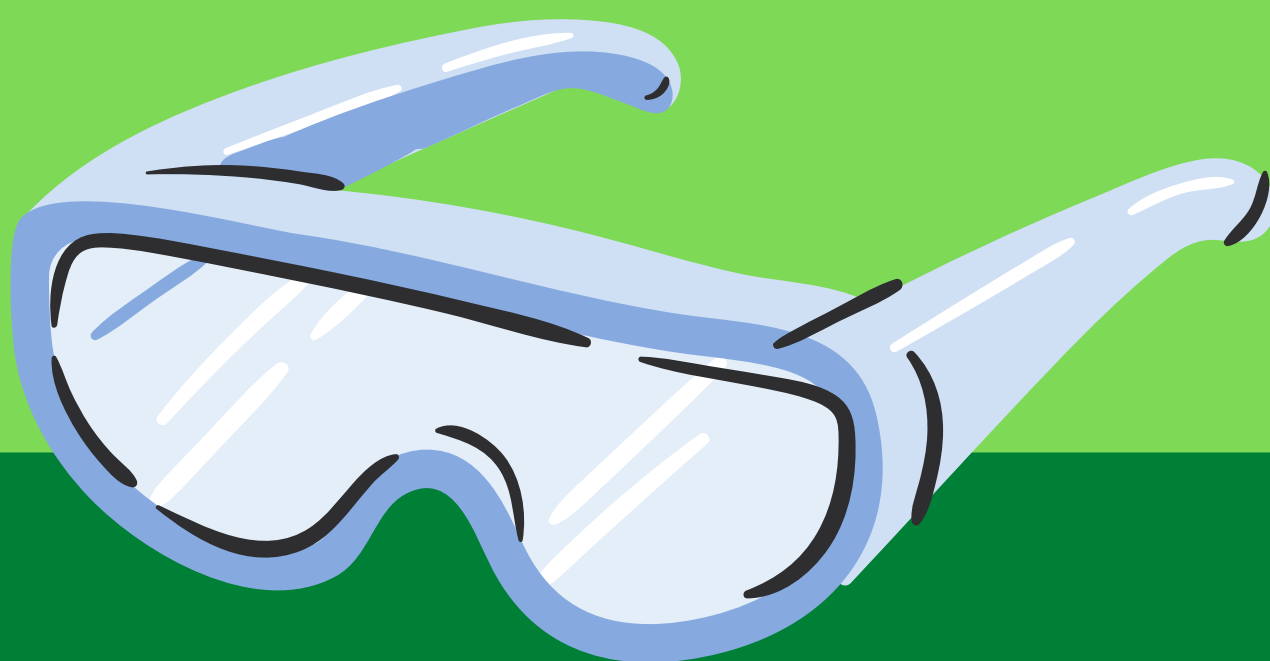
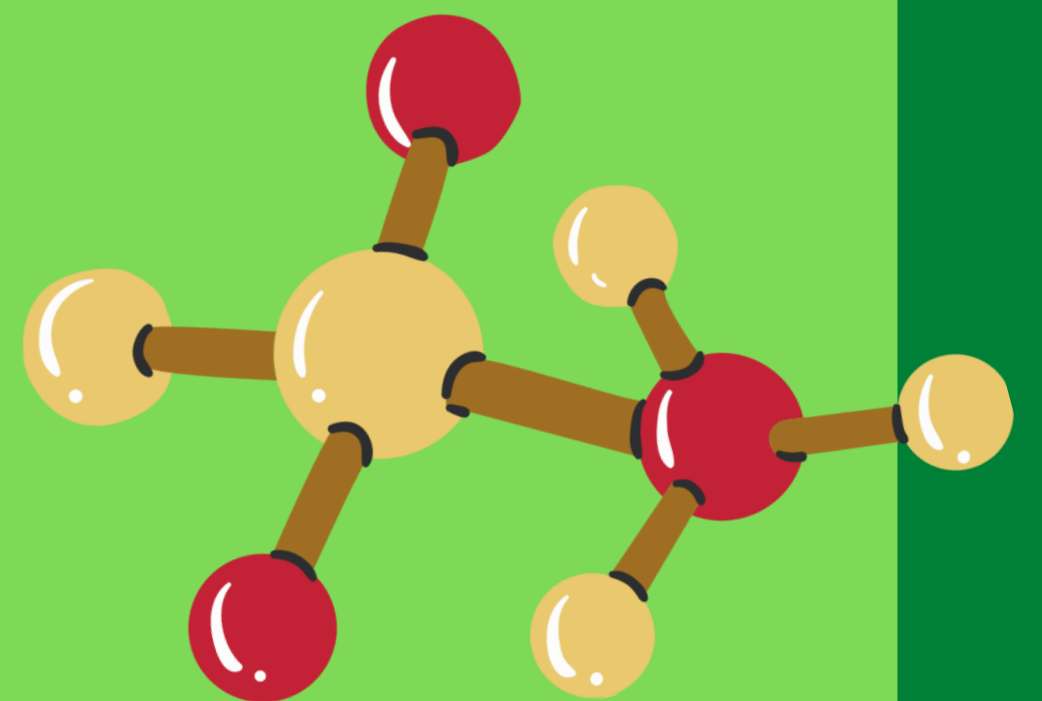
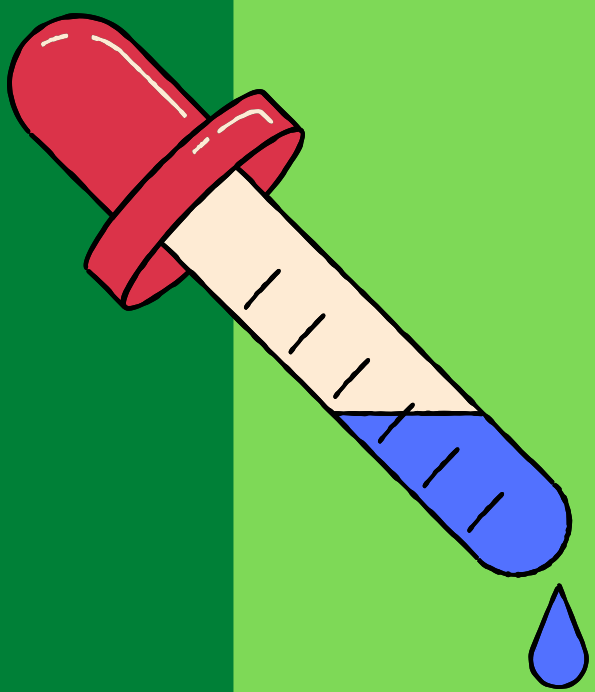


TOWARDS
PEDAGOGY OF
EXPLORATION &
INVESTIGATION



Educational Activity Research Centre
Presents



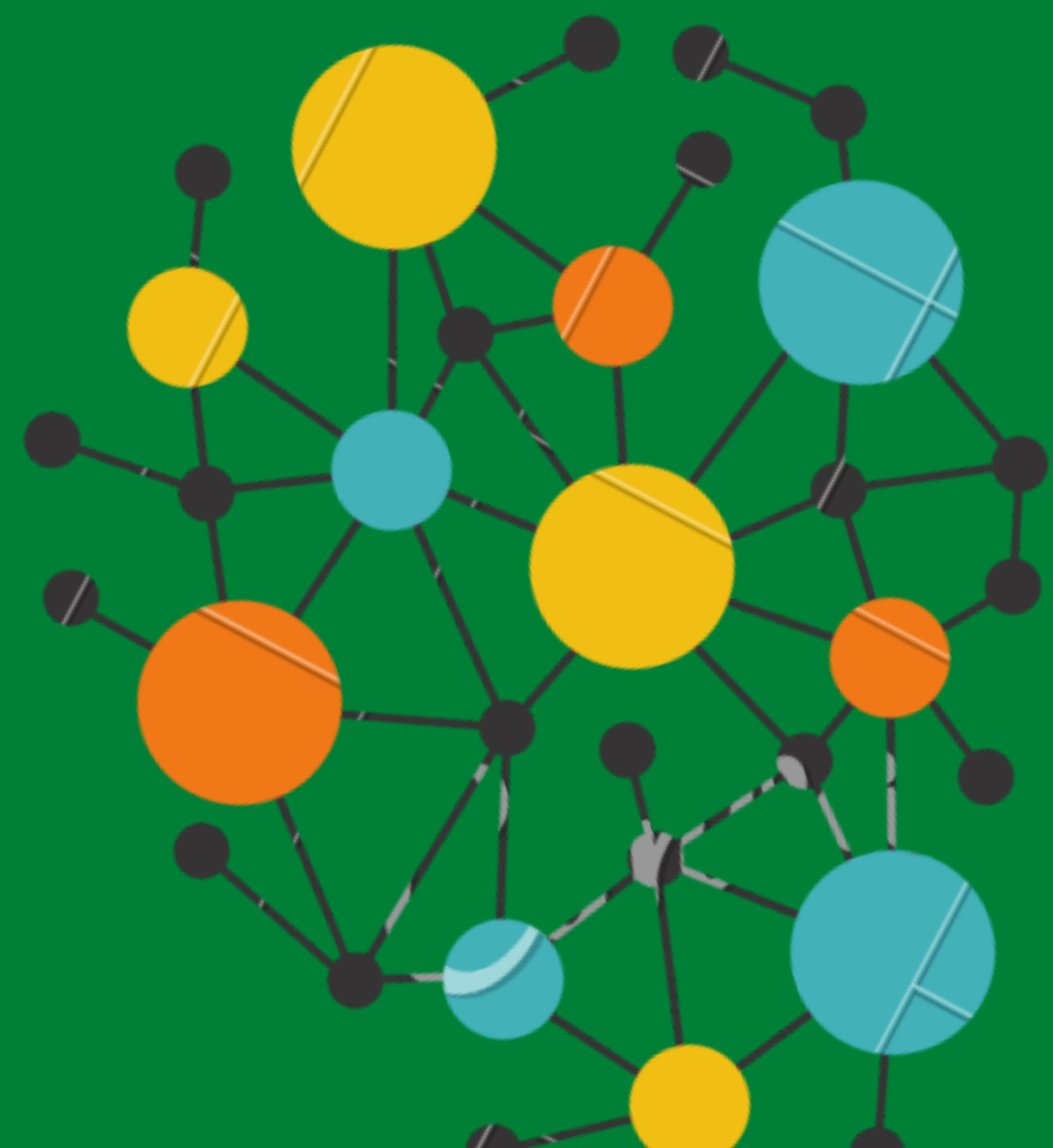
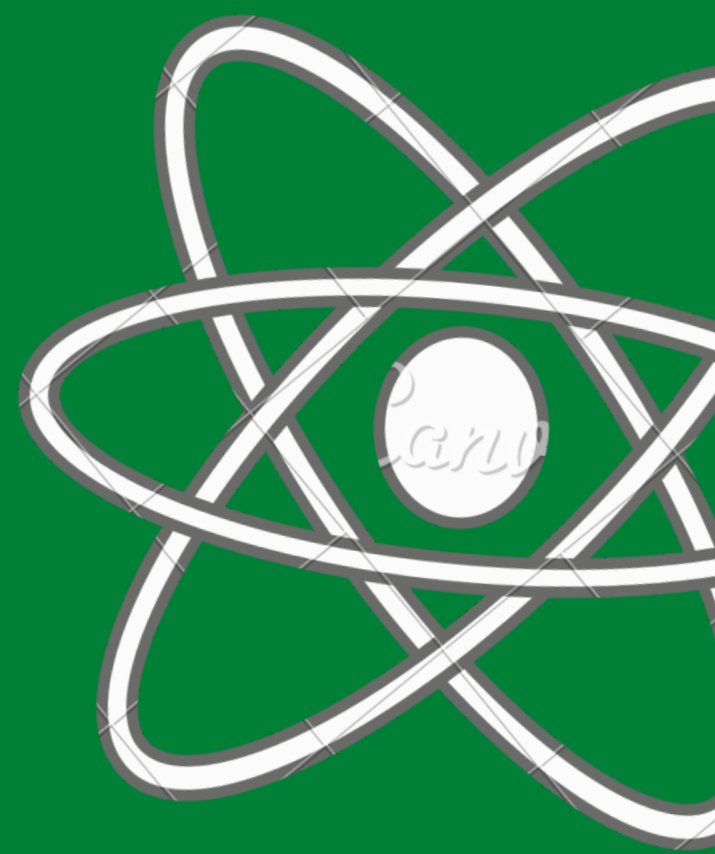
TOWARDS PEDAGOGY OF EXPLORATION & INVESTIGATION

ORIENTATION COURSE FOR SCIENCE TEACHERS
BASED ON PRACTICES AT JNANA PRABODHINI

Eligibility : TGT/PGT/ /M.Sc. / BE

Fees : 8,000/- + GST

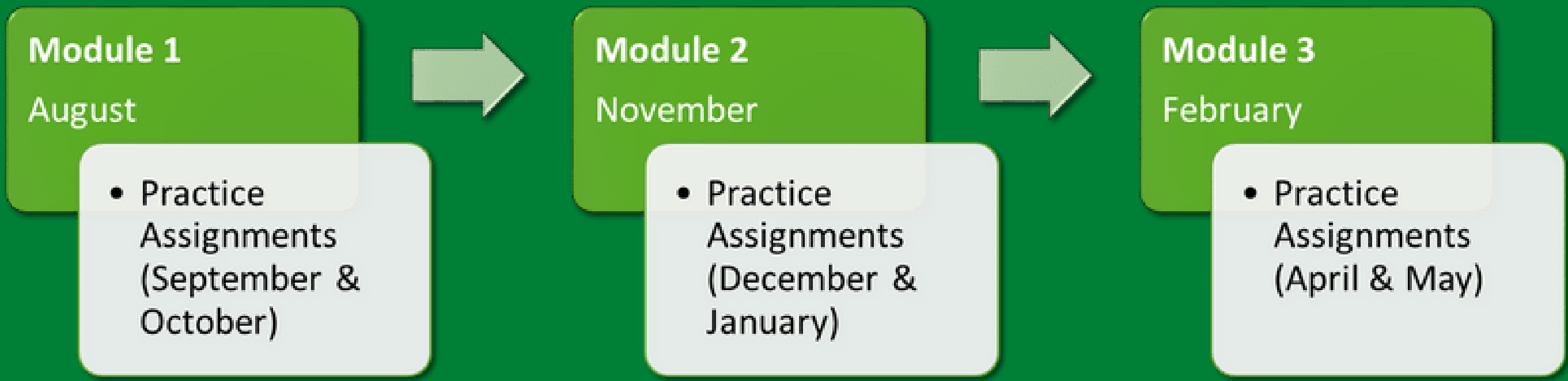
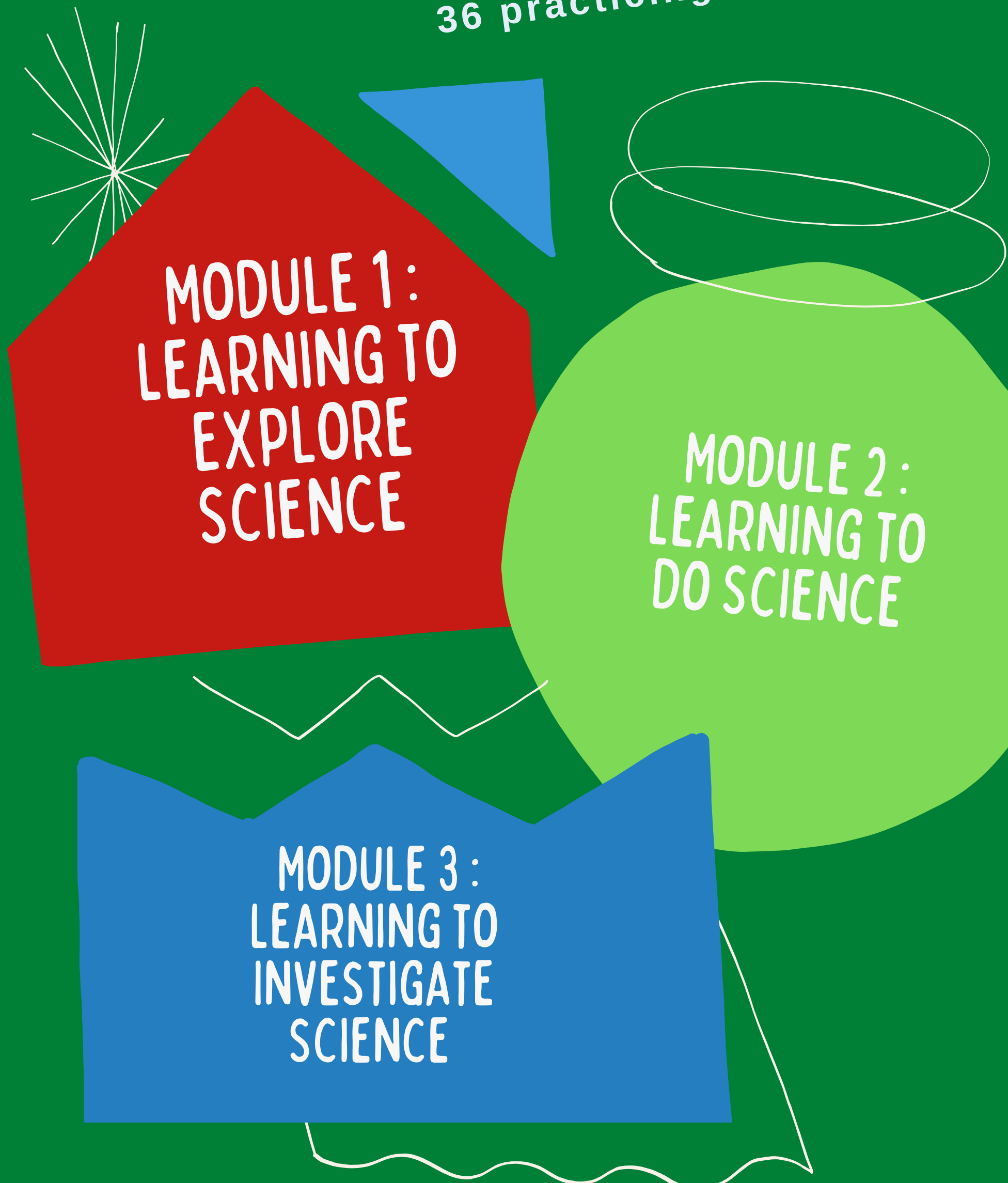
Batch: 20



Towards Pedagogy of Exploration & Investigation of



Input of 12 Days,
54 hrs &
36 practicing hrs



Timeline



Module 1 : Learning to Explore Science

Nurturing skills required for learning science

Orientation {4days, 16sessions, 18hrs}

- Understanding science and learning science
- Skill development for science learning : observation, classification, questioning, measurement, etc
- Concept formation
- Active learning strategies : Organizing learning experiences

Practice Assignments {8hrs}

- Two skills enrichment Workshops
- Organization of Experiential Learning Day
- Automata workshop



Module 2 : Learning to Do Science

Hands on Activity-based Inquiry for Concept enrichment

Orientation {4days, 16sessions, 18hrs}

- Concept enrichment
- Hands on activities for inquiry based learning
- Thinking about science teaching
- Inquiry based science learning
- Study skills for science education

Practice Assignments {12hrs}

- 6 workshops: activity based workshops
- Concept Map Development activities



Module 3 : Learning to Investigate Science

Inculcate Method of science through PBL

Orientation {4days, 16sessions, 18hrs}

- Project based learning
- From experiment to project
- Methods of exploration
- Method of science : system & variable analysis
- Technology enhanced science teaching
- Continuous comprehensive evaluation

Practice Assignments {16hrs}

- Conduct a camp to introduce method of science
- Guide a collection/survey/model making/investigatory project
- Developing a E-resource





Towards
Pedagogy
of
Exploration &
Investigation



**Educational Activity Research Centre
Jnana Prabodhini, Pune**

<https://www.jpearc.org/>

Ph. 020-24207209, 9022476146

contact.earc@jnanaprabodhini.org

